

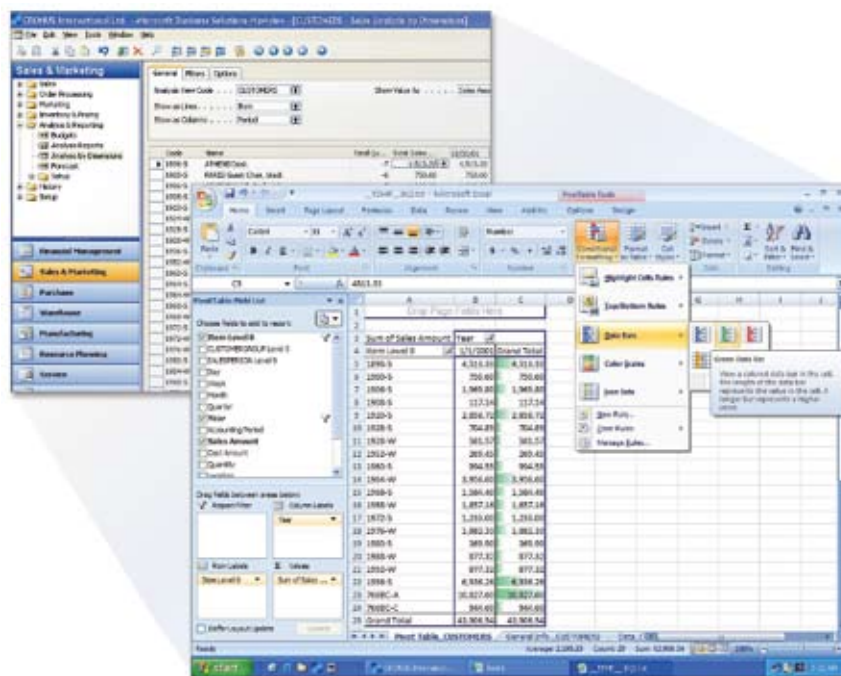
Business Intelligence

Business Intelligence in Microsoft Dynamics NAV

BENEFITS:

- **Deliver decision-driving information across your organization.** Employees can access real-time overviews of business metrics; drill down into the details of transactions, customer records, and histories; and keep their finger on the pulse of your business operations.
- **Fuel productivity with relevant information and tools.** With access to up-to-date information and powerful analysis and reporting tools, employees can monitor performance, analyze trends, and spot potential problems before they occur.
- **Work smoothly with Microsoft Office system programs.** Tight integration across Microsoft Dynamics NAV with familiar programs such as Microsoft Office Excel® makes it easy to access, analyze, and share information—without the need to juggle applications.
- **Help accelerate speed and performance with SQL Server technologies.** Meet demanding requirements for data management and analysis and quickly build customized reports with SQL Server 2005 and SQL Server Reporting Services.

Deliver meaningful insight across your organization with powerful business intelligence capabilities in Microsoft Dynamics NAV. With access to real-time data and a wide range of analytical and reporting tools—including graphical displays, online analytical processing (OLAP) cubes, and Web-based delivery options—your people can make informed, confident decisions that help drive business success.



Easily export raw data from Microsoft Dynamics NAV into Excel for detailed analysis.

Build Your Business Intelligence Capabilities

With Microsoft Dynamics NAV, organizations can benefit from access to real-time, integrated data and built-in access and analysis tools. Your business can extend its intelligence capabilities with more complex views of business data and access to big-picture views of company information by adding dedicated business intelligence software built on the powerful, security-enhanced Microsoft® SQL Server™ 2005 platform.

Share Enterprise-Wide Intelligence with Advanced Microsoft Tools

Microsoft Dynamics NAV works with sophisticated Microsoft applications to help your business meet exacting analytic and reporting requirements. SQL Server 2005 Analysis Services provides integrated views of business data for advanced reporting, OLAP analysis, key performance indicator (KPI) scorecards, and data mining. With SQL Server 2005 Reporting Services, people across the organization can quickly create their own reports from scratch and share them with others.

FEATURES:

Business Analytics

Work easily with advanced analytical tools for a 360-degree view of business performance. Set up and review graphical displays and reports. Perform targeted analysis of any detailed information in Microsoft Dynamics NAV for deep insight into areas of your business.

Flexible information views

Sort and filter data, drill down to details, and create graphical displays to view and analyze sales and profitability trends, inventory movement, orders and fulfillments, marketing campaigns, and more.

Microsoft Office integration

Extract, analyze, and present data from across your business while working within familiar Microsoft Office programs such as Excel, Microsoft Office Word, and Microsoft Office Outlook®. You can also export data in any format using Microsoft Office Open XML Formats.

Employee Portal

Provide online access to real-time data, reports, and collaboration tools with Employee Portal in Microsoft Dynamics NAV, a Web-based interface built on Microsoft Windows® SharePoint® Services.

Customized reporting

Create reports from scratch using step-by-step report wizards. Use SQL Server 2005 Reporting Services to quickly extract information on an as-needed basis and build contextualized reports using the Report Builder.

Dimension attributes

Define and assign characteristics to the information you record in your daily work. Set up dimensions—such as product line, geographic sales region, and time period—and value hierarchies that reflect reporting and accounting needs.

OLAP cubes

Work within an intuitive Outlook interface to build targeted analyses using predefined or customized OLAP cubes, and then deliver analyses directly to people's desktops.

Record links

Add links within Microsoft Dynamics NAV records to external information and then store the data within Microsoft Office SharePoint Server for easy access and sharing.

Open Database Connectivity (ODBC)

Enhance reporting and analytics capabilities with an ODBC driver that supports most business intelligence tools on the market.

Integrated Development Environment (IDE)

Streamline development with a built-in IDE that enables you to support your specific business requirements and changing needs.

For more information about Business Intelligence in Microsoft Dynamics NAV, visit www.microsoft.com/dynamics/nav.

This document is for informational purposes only.

MICROSOFT MAKES NO WARRANTIES, EXPRESS, IMPLIED, OR STATUTORY, AS TO THE INFORMATION IN THIS DOCUMENT.

Microsoft